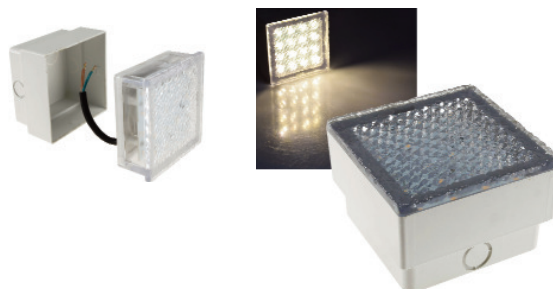


LED paving stones "BRIKX" can be walked on + driven over 10kN - IP67

LED light stones "Brikx"

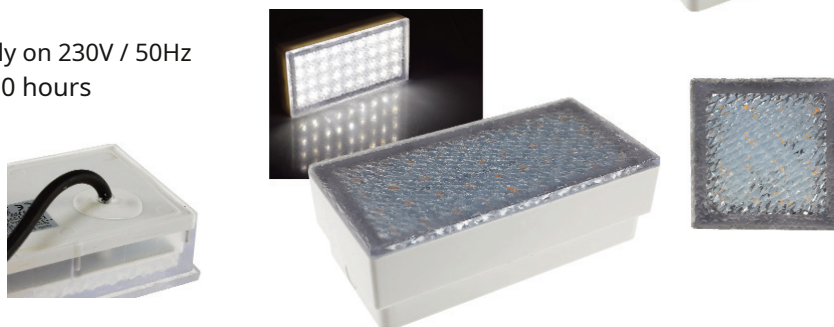
Product description:

Make your yard, driveway or sidewalk an eye-catcher - let your neighbors be amazed. These paving stones can be easily laid or integrated into an existing paved area. The luminous signposts are used everywhere and cut a classy figure in the pavement, in pavement slabs, steps, fountains or facades.



Common technical details:

- RA > 80, power factor > 0.55 • Operation directly on 230V / 50Hz
- Energy efficiency class G • Service life 20,000 hours
- On / Off 20,000x • 100% bright < 1sec.
- Beam angle 120 ° • not dimmable
- Approx. 25cm connection cable
- Protection class IP67 waterproof
- walkable + drivable 10kN
- including ground sleeve



Safety instructions and important information!

In order to guarantee safety at all times and to use the full performance spectrum of the device, please read the safety instructions carefully and carefully!

The product must not be modified technically or mechanically, otherwise the operating license and conformity will expire with immediate effect! The nameplate / imprint must not be removed under any circumstances! Check the product for damage before each use. If the product is damaged, it must be checked, repaired or replaced by a specialist company and disposed of in accordance with the applicable guidelines (footer page 1). Under no circumstances may a damaged or defective product continue to be used! Please be sure to secure all packaging material and accessories, especially small parts such as screws and foils, from children and animals. Suffocation hazard! In the event of non-compliance with the instructions or improper use, the manufacturer Improper use or changes made to the product, no liability whatsoever for property damage or personal injury. This product must never be operated, kept, stored or stored in the reach of children or animals. If this product is passed on, the instructions and packaging must be included. Thank you! We reserve the right to make misprints or changes to packaging, the product or the instructions.

Separate safety instructions for 230V installations

The installation or the intervention in the power grid can lead to very serious injuries up to a fatal electric shock. • Connection or installation may only be carried out by qualified personnel / qualified electricians in a voltage or current-free state! For all work, switch off the circuit in which the installation is being carried out completely at the main fuse! Otherwise there is a DANGER TO LIFE !! To connect all 230V ~ / 50Hz components, the minimum cross-section (1.5mm²) of the connection line must never be undershot. Be sure to use a cable that has been expressly approved for this use. There are no serviceable parts inside this product. The correct connection must be checked; the voltage may only be switched on again when the installation is correct.

Electronic products that are marked with the crossed-out garbage can do not belong in the household waste! You can hand these products over to the municipal collection points free of charge. Inquire at your local authority, the responsible town hall or a local or municipal waste disposal company. Many Thanks. Used batteries should not be put in the household garbage. Consumers are legally obliged to bring batteries to a suitable collection point at the trade or municipality. Old batteries may contain pollutants or heavy metals that can damage the environment and health. The symbols under the label (garbage can) stand for: Pb: Battery contains lead, Cd: Battery contains cadmium Hg: battery contains mercury. The environment and ChiliTec say thank you.

Technical details of the different models:

LED light stones "Brikx"

Details variants: (EEKL = energy efficiency class according to 2019/2020 / EU & 2019/2015 / EU)

Item No.	Color / type	power	Consumption / 1000h	Lumens	Kelvin	EEKL	dimmable	Protection class	Installation hole Ø
22152	Brikx10ww	1W	3KWh	90lm	2900K	F.	no	IP67	10x10x7cm
22153	Brikx20ww	2.6W	3KWh	300lm	3000K	F.	no	IP67	20x10x7cm
22154	Brikx10nw	1W	1KWh	92lm	4500K	E.	no	IP67	10x10x7cm
22155	Brikx20nw	2.6W	3KWh	180lm	4500K	G	no	IP67	20x10x7cm

Installation instructions for power connection:

The supply line should be freely accessible and correctly insulated. Use a lamp clamp or clamp with an operating lever that is suitable for this use. The lines of the lamp are conductors with many strands, not a rigid conductor. This means that it cannot be fastened in a standard installation clamp. So connect the lines and check that the individual wires are securely in place. Be careful not to squeeze any lines. A protective conductor (PE) is not required for this installation, as it is a double-insulated driver with no touchable, conductive parts. A protective conductor that may arrive in the supply line must be isolated or continued / looped through via an additional terminal. When everything is firmly and securely installed,

- The built-in lamp is relatively tight in the supplied ground sleeve (built-in head). The lamp can be removed safely by carefully levering it out. The lamp is relatively stuck in the body, but it has to be that way for reasons of load-bearing capacity. It is easiest if you lever from 2 opposite sides at the same time.
- A drainage system must be created under the built-in body so that any seeping water does not "stop" at the floor heater and it is in standing water. The best way to do this is to use a gravel bed made of coarser gravel with a gravel depth of at least 10 cm. This gravel bed should be around and below the in-ground spotlight. The in-ground shell should have a secure and firm hold in the gravel bed so that the spotlight cannot sag even when it is driven over.
- Place the recessed floor spotlight in the desired location on its gravel bed. Make sure that no water can collect in this place (keyword .. puddles).
- Connect the supply line according to protection class II and the line connection according to IP67 protection type (eg with connection box or socket sleeve). Only use cables that are approved for outdoor use or for use in the ground.
- The lines must be free of pressure, tension or rotation, even if the in-ground spotlight is run over. Check again the correct connection and the integrity of the lines.

safety instructions

- Never open the product, there are no serviceable parts - only by qualified personnel.
- The product must not be exposed to heat (> 40 °).
- Make sure that the cables are not kinked, crushed or pinched.
- Before connecting, check that the operating voltage (product) matches the mains voltage.
- Operation is only permitted on 230V ~ / 50Hz mains voltage
- Never touch the product, the power cord or the plug with damp / wet hands.
- Remodeling, changing or expanding the product is not permitted.

Notes on cleaning, care and environmental protection

To clean this product, use a dry, lint-free cotton cloth. In the case of heavier soiling, possibly with a slightly moistened, slightly damp cloth. Make sure that the product is switched off and disconnected from the mains. Never use chemical cleaning agents. Never use liquids that could damage the surface of the product (e.g. scouring milk). The product does not contain any serviceable parts. The product is marked with a crossed-out garbage can, please note the disposal information in the footer of the first page of these instructions.